

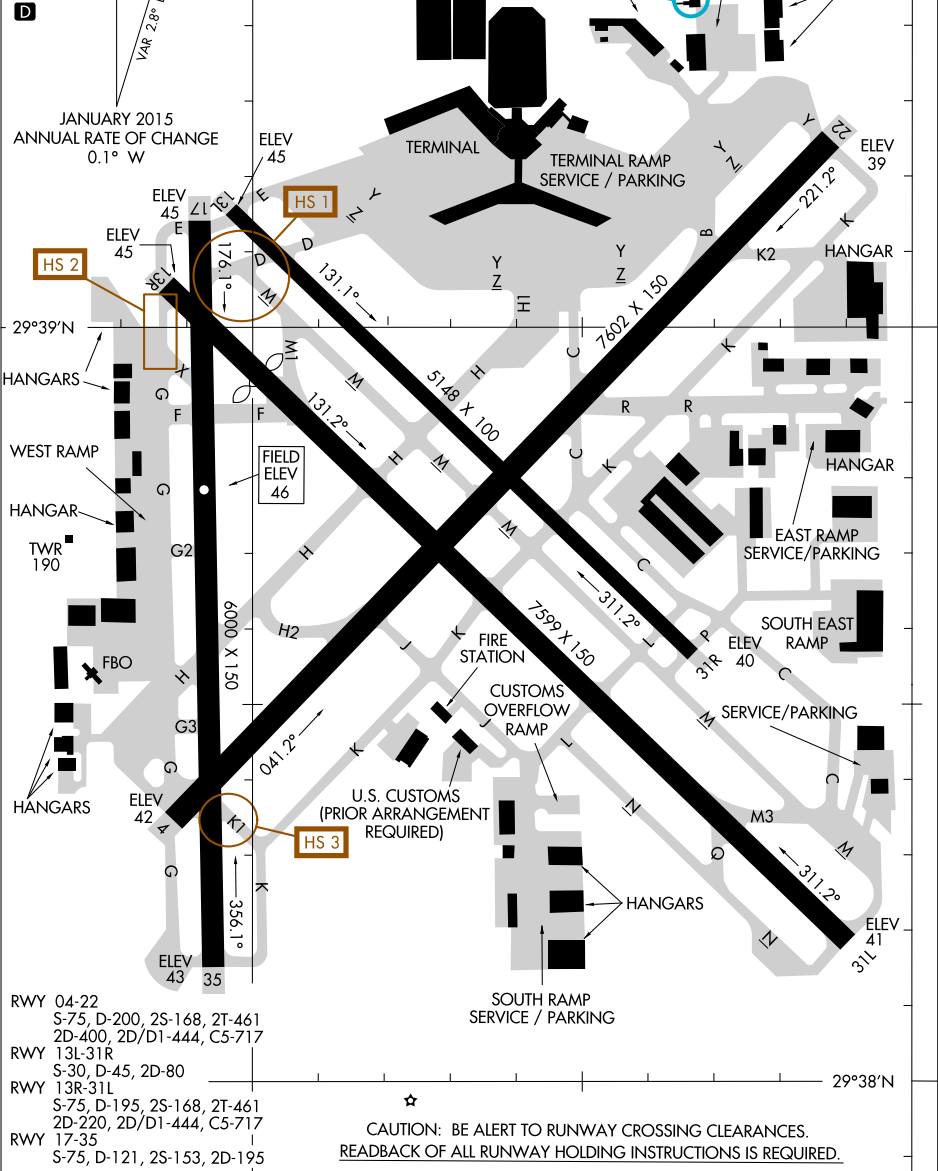
# 17117 AIRPORT DIAGRAM

AL-198 (FAA)

WILLIAM P HOBBY (HOU)  
HOUSTON, TEXAS

D-ATIS  
124.6  
HOBBY TOWER  
118.7 256.9  
GND CON  
121.9  
CLNC DEL  
125.45  
CPDLC  
**D**

ASDE-X in use. Operate transponders with altitude reporting mode and ADS-B (if equipped) enabled on all airport surfaces.



JANUARY 2015  
ANNUAL RATE OF CHANGE  
0.1° W

HANGARS

WEST RAMP

HANGAR

TWR 190

FBO

HANGARS

RWY 04-22  
S-75, D-200, 2S-168, 2T-461  
2D-400, 2D/D1-444, C5-717

RWY 13L-31R  
S-30, D-45, 2D-80

RWY 13R-31L  
S-75, D-195, 2S-168, 2T-461  
2D-220, 2D/D1-444, C5-717

RWY 17-35  
S-75, D-121, 2S-153, 2D-195

CAUTION: BE ALERT TO RUNWAY CROSSING CLEARANCES.  
READBACK OF ALL RUNWAY HOLDING INSTRUCTIONS IS REQUIRED.